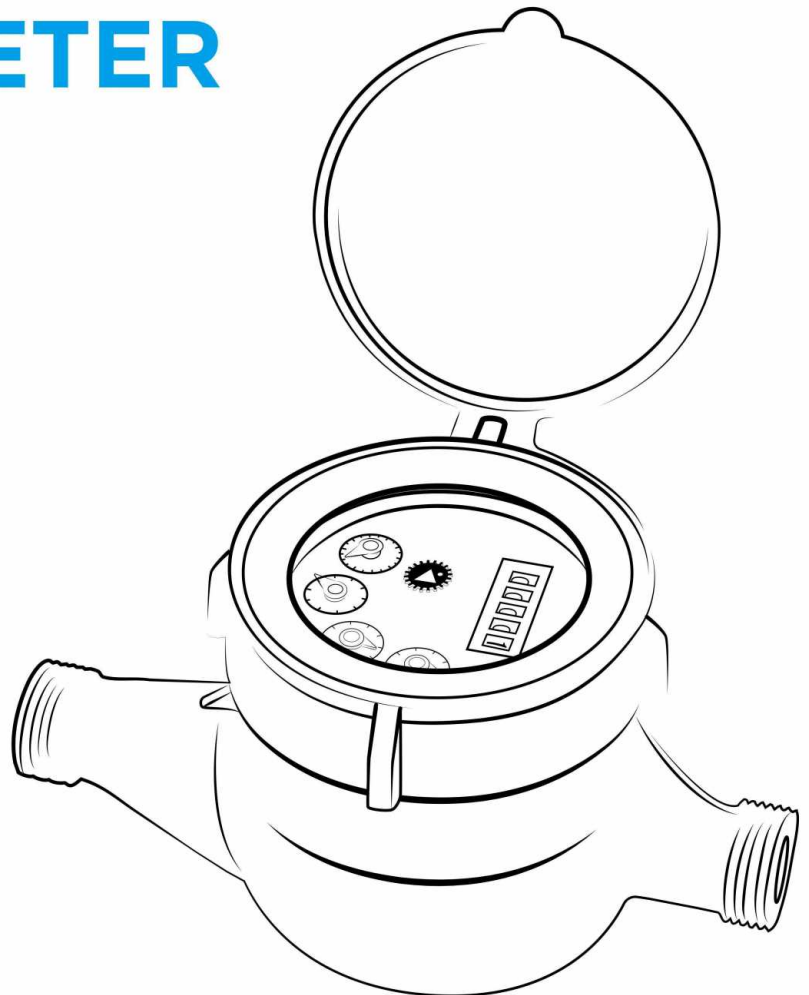




WATER METER

Catalogue:

- Pulse Output Water Meter





Model: LXSGY-15E-50E

Pulse Output Water Meter

Feature:

- Multi jet, Dry-dial
- Material body: Brass
- Size: DN15 to DN50mm, (1/2" – 2")
- Available for cold water (50°C), hot water (90°C)
- Accuracy: Class B / Class C / R160
- Pulse output reading: 1 L/pulse; 10 L/pulse; 0.1 gallon/pulse; 1 gallon/pulse

Main Technical Data:

According to ISO4064 (GB/T778.1-1996) Standard

Size		Class	Qs	Qp	Qt	Qmin	Min reading	Max reading
DN(mm)	Inch		Overload flow	Nominal flow	Transitional flow	Min flow		
		m ³ /h		L/h		m ³		
15	1/2"	A	3	1.5	150	60	0.0001	99999
		B			120	30		
		C			22.5	15		
20	3/4"	A	5	2.5	250	100	0.0001	99999
		B			200	50		
		C			37.5	25		
25	1"	A	7	3.5	350	140	0.0001	99999
		B			280	70		
32	1 1/4"	A	12	6	600	240	0.0001	99999
		B			480	120		
40	1 1/2"	A	20	10	1000	400	0.001	99999
		B			800	200		
50	2"	A	30	15	1500	600	0.001	99999
		B			1200	300		

INDICATING ERROR

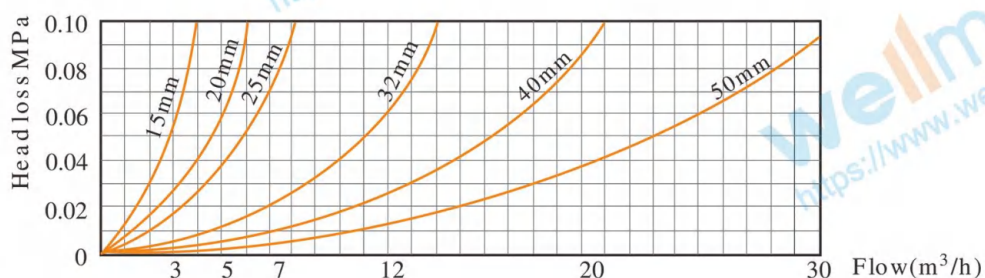
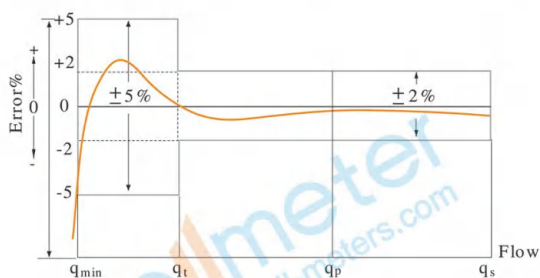
At low zone is $\pm 5\%$ from minimum flow rate (qmin) to transitional flow rate (qt) exclusive boundary

At high zone is $\pm 2\%$ from transitional flow rate (qt) to overload flow rate (qs)

Model:LXSGY-15E-50E

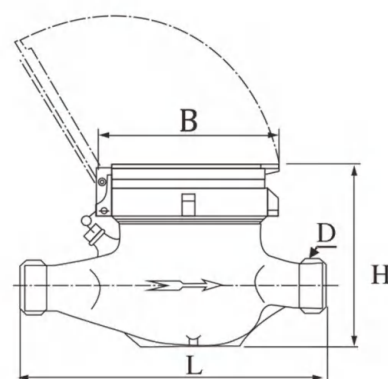
According to ISO4064 (GB/T778.1-2007) Standard

DN SIZE	Mm Inch	15 1/2"	20 3/4"	25 1"	32 1 1/4"	40 1 1/2"	50 2"
Q4(m ³ /h)		3.125	5	7.875	12.5	20	31.25
Q3(m ³ /h)		2.5	4	6.3	10	16	25
R80	Q2(L/h)	50	80	126	200	320	500
	Q1(L/h)	31.25	50	78.75	125	200	312.5
R100	Q2(L/h)	40	64	100.8	160	256	400
	Q1(L/h)	25	40	63	100	160	250
R125	Q2(L/h)	32	51.2	80.64	128	204.8	320
	Q1(L/h)	20	32	50.4	80	128	200
R160	Q2(L/h)	25	40	63	100	160	250
	Q1(L/h)	15.625	25	39.375	62.5	100	156.25
Min reading(m ³)		0.0001	0.0001	0.0001	0.0001	0.001	0.001
Max reading(m ³)		99999	99999	99999	99999	99999	99999
Max pressure(MAP)		16	16	16	16	16	16
Max loss(ΔP)		63	63	63	63	63	63
Max temperature		T50	T50	T50	T50	T50	T50



Dimensions and Weight:

Meter size Dia DN (mm)	L Length	B Width	H Height	Connecting Thread D	Weight Kg
15	165	99	108	G 3/4B	1.4
20	190	99	108	G 1 B	1.7
25	225	104	114	G1 1/4B	2.4
32	230	104	117	G1 1/2B	2.7
40	245	128	158	G 2'B	4.5
50	280	128	183	G2 1/2 B	7.2



WORKING CONDITION:

Water temperature: $\leq 50^{\circ}\text{C}$ for cold water meter

Water temperature: $\leq 90^{\circ}\text{C}$ for hot water meter

Working pressure: $\leq 1.6\text{Mpa}$

wellmeter

Ningbo Well Energy Technology Co.,Ltd

<https://www.well-meters.com>

sales@well-meters.com

+86-574-63702808

Model: LXSGY-15S-50S

Pulse Output Water Meter

Feature:

- Multi jet, Dry-dial
- Material body: Nylon plastic
- Size: DN15 to DN50mm, (1/2" – 2")
- Available for cold water (50°C)
- Accuracy: Class B / Class C / R160
- Pulse output reading: 1 L/pulse; 10 L/pulse; 0.1 gallon/pulse; 1 gallon/pulse



Main Technical Data:

According to ISO4064 (GB/T778.1-1996) Standard

Size		Class	Qs	Qp	Qt	Qmin	Min reading	Max reading
DN(mm)	Inch		Overload flow	Nominal flow	Transitional flow	Min flow		
		m ³ /h		L/h		m ³		
15	1/2"	A	3	1.5	150	60	0.0001	99999
		B			120	30		
		C			22.5	15		
20	3/4"	A	5	2.5	250	100	0.0001	99999
		B			200	50		
		C			37.5	25		
25	1"	A	7	3.5	350	140	0.0001	99999
		B			280	70		
32	1 1/4"	A	12	6	600	240	0.0001	99999
		B			480	120		
40	1 1/2"	A	20	10	1000	400	0.001	99999
		B			800	200		
50	2"	A	30	15	1500	600	0.001	99999
		B			1200	300		

INDICATING ERROR

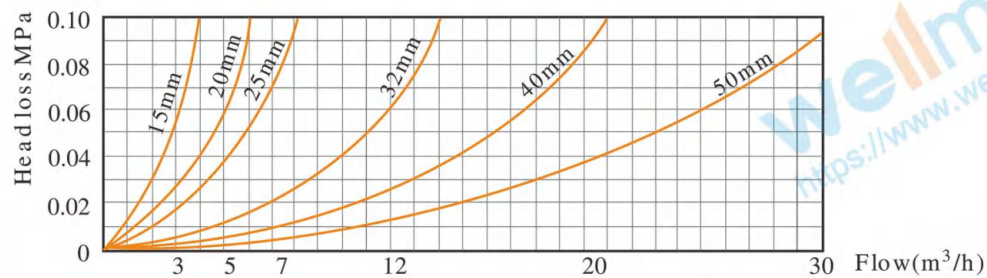
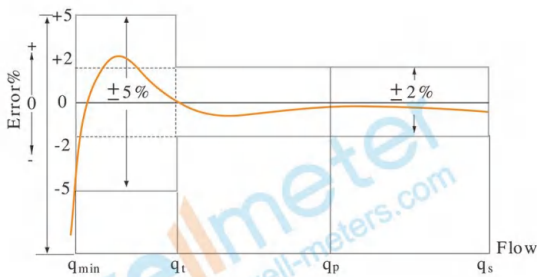
At low zone is $\pm 5\%$ from minimum flow rate (qmin) to transitional flow rate (qt) exclusive boundary

At high zone is $\pm 2\%$ from transitional flow rate (qt) to overload flow rate (qs)

Model:LXSGY-15S-50S

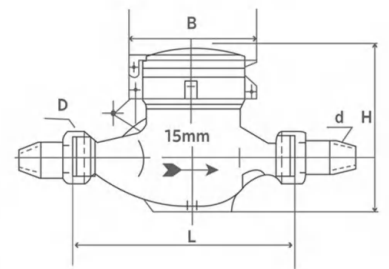
According to ISO4064 (GB/T778.1-2007) Standard

DN SIZE	Mm Inch	15 1/2"	20 3/4"	25 1"	32 1 1/4"	40 1 1/2"	50 2"
Q4(m ³ /h)		3.125	5	7.875	12.5	20	31.25
Q3(m ³ /h)		2.5	4	6.3	10	16	25
R80	Q2(L/h)	50	80	126	200	320	500
	Q1(L/h)	31.25	50	78.75	125	200	312.5
R100	Q2(L/h)	40	64	100.8	160	256	400
	Q1(L/h)	25	40	63	100	160	250
R125	Q2(L/h)	32	51.2	80.64	128	204.8	320
	Q1(L/h)	20	32	50.4	80	128	200
R160	Q2(L/h)	25	40	63	100	160	250
	Q1(L/h)	15.625	25	39.375	62.5	100	156.25
Min reading(m ³)		0.0001	0.0001	0.0001	0.0001	0.001	0.001
Max reading(m ³)		99999	99999	99999	99999	99999	99999
Max pressure(MAP)		16	16	16	16	16	16
Max loss(ΔP)		63	63	63	63	63	63
Max temperature		T50	T50	T50	T50	T50	T50



Dimensions and Weight:

Meter size Dia DN (mm)	L Length	B Width	H Height	Connecting Thread D	Weight Kg
15	165	99	104	G 3/4B	0.53
20	190	99	125	G 1 B	0.6
25	260	106	132	G1 1/4B	0.78
32	230	104	120	G1 1/2B	0.82
40	245	128	150	G 2'B	1.2
50	300	130	150	G2 1/2 B	1.46



WORKING CONDITION:

Water temperature: $\leq 50^{\circ}\text{C}$ for cold water meter

Working pressure: $\leq 1.6\text{Mpa}$

wellmeter

Ningbo Well Energy Technology Co.,Ltd

<https://www.well-meters.com>

sales@well-meters.com

+86-574-63702808

Model: LXDGY-13-20

Pulse Output Water Meter

Feature:

- Single jet, Dry-dial
- Material body: Brass
- Size: DN15 to DN20mm, (1/2" – 3/4")
- Available for cold water (50°C), hot water (90°C)
- Accuracy: Class B / R80 / R100 / R125 / R160
- Pulse output reading: 10 L/Pulse



Main Technical Data:

According to ISO4064 (GB/T778.1-1996) Standard

Size		Class	Qs	Qp	Qt	Qmin	Min reading	Max reading
DN(mm)	Inch		Overload flow	Nominal flow	Transitional flow	Min flow		
		m ³ /h			L/h		m ³	
15	1/2"	A	3	1.5	150	60	0.0001	99999
		B			120	30		
20	3/4"	A	5	2.5	250	100	0.0001	99999
		B			200	50		

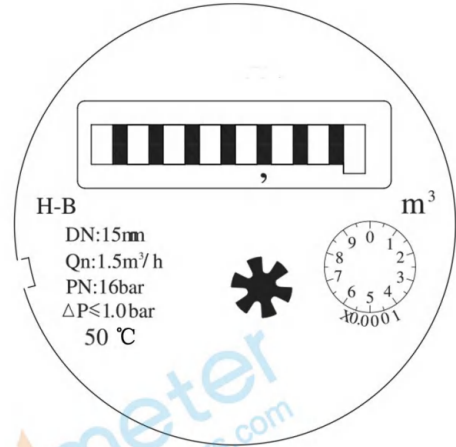
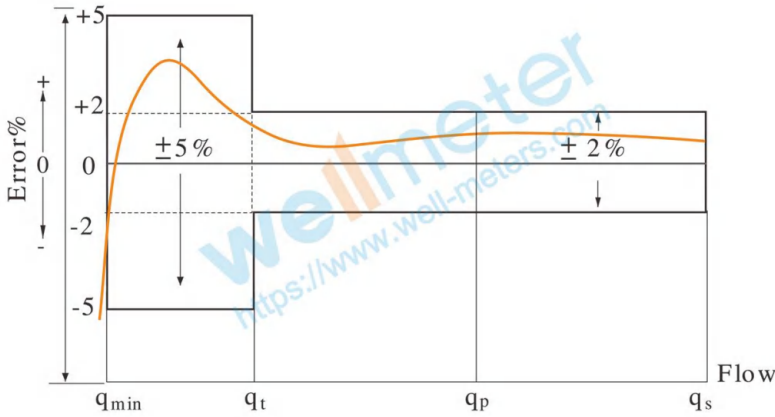
According to ISO4064 (GB/T778.1-2007) Standard

DN SIZE	Mm Inch	15 1/2"	20 3/4"
Q4(m ³ /h)		3.125	5
Q3(m ³ /h)		2.5	4
R80	Q2(L/h)	50	80
	Q1(L/h)	31.25	50
R100	Q2(L/h)	40	64
	Q1(L/h)	25	40
R125	Q2(L/h)	32	51.2
	Q1(L/h)	20	32
R160	Q2(L/h)	25	40
	Q1(L/h)	15.625	25
Min reading(m ³)		0.0001	0.0001
Max reading(m ³)		99999	99999
Max pressure(MAP)		16	16
Max loss(Δ P)		63	63
Max temperature		T50	T50

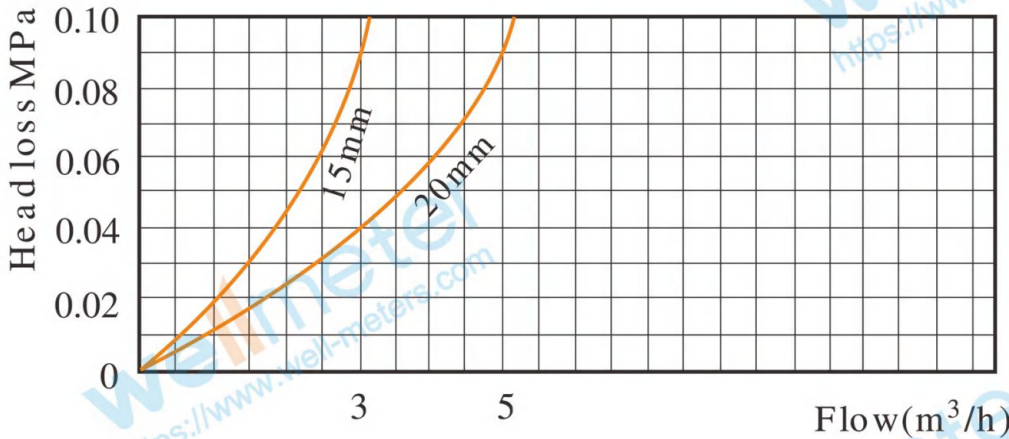
Model: LXDGY-13-20

INDICATING ERROR

At low zone is $\pm 5\%$ from minimum flow rate (q_{min}) to transitional flow rate (q_t) exclusive boundary
 At high zone is $\pm 2\%$ from transitional flow rate (q_t) to overload flow rate (q_s)

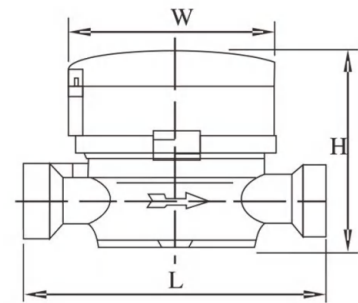


Head Loss Curve:



Dimensions and Weight:

Meter size Dia DN (mm)	L Length	W Width	H Height	Connecting Thread D	Weight Kg
15	110	80	80	G 3/4B	0.6
20	130	80	80	G 1"B	0.9



WORKING CONDITION:

Water temperature: $\leq 50^\circ\text{C}$ for cold water meter

Water temperature: $\leq 90^\circ\text{C}$ for hot water meter

Working pressure: $\leq 1.6\text{Mpa}$

wellmeter

Ningbo Well Energy Technology Co.,Ltd

<https://www.well-meters.com>

sales@well-meters.com

+86-574-63702808

Model: LXDGY-13E

Single Jet Water Meter

Feature:

- Single jet, Dry-dial
- Material body: Brass
- Size: DN15mm, (1/2")
- Available for cold water (50°C), hot water (90°C)
- Accuracy: Class C / R160
- Pulse output 1 L/Pulse



Main Technical Data:

According to ISO4064 (GB/T778.1-1996) Standard

Size		Class	Qs	Qp	Qt	Qmin	Min reading	Max reading
DN(mm)	Inch		Overload flow	Nominal flow	Transitional flow	Min flow		
			m³/h		L/h		m³	
15	1/2"	C	3	1.5	22.5	15	0.0001	99999

According to ISO4064 (GB/T778.1-2007) Standard

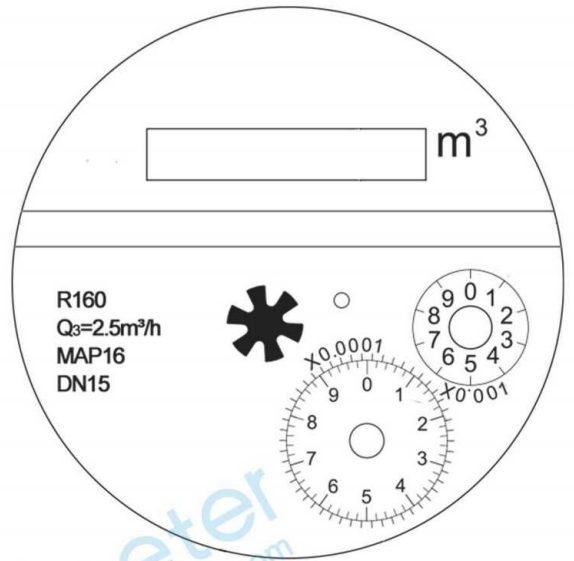
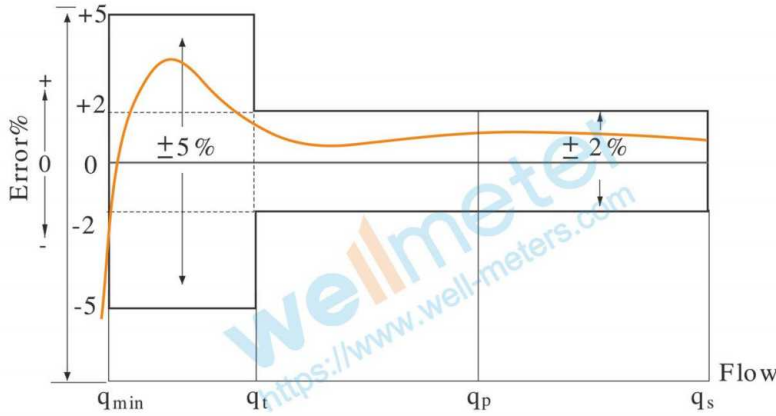
DN	Mm	15
SIZE	Inch	1/2"
Q4(m³/h)		3.125
Q3(m³/h)		2.5
R160	Q2(L/h)	25
	Q1(L/h)	15.625
Min reading(m³)		0.0001
Max reading(m³)		99999
Max pressure(MAP)		16
Max loss(Δ P)		63
Max temperature		T50

INDICATING ERROR

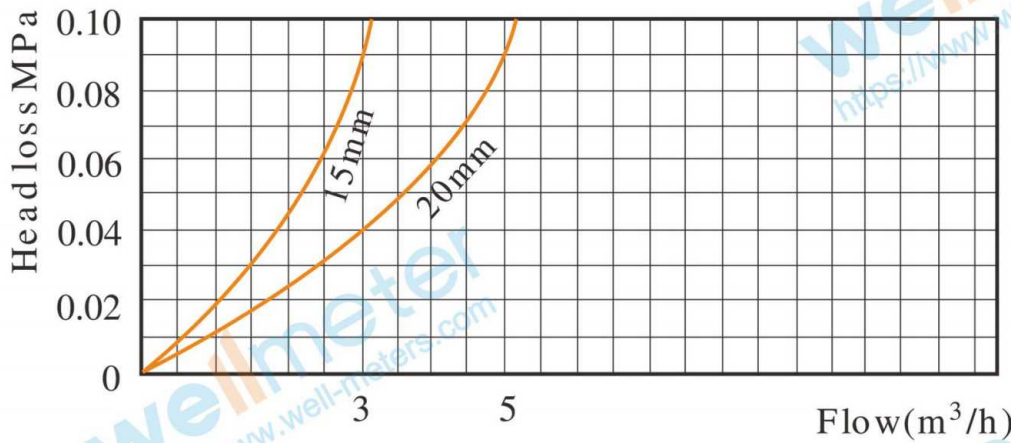
At low zone is $\pm 5\%$ from minimum flow rate (qmin) to transitional flow rate (qt) exclusive boundary
 At high zone is $\pm 2\%$ from transitional flow rate (qt) to overload flow rate (qs)

Model: LXDGY-13E

Error Curve:

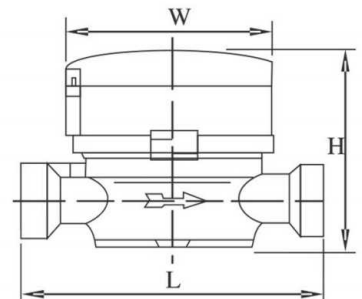


Head Loss Curve:



Dimensions and Weight:

Meter size Dia DN (mm)	L Length	W Width	H Height	Connecting Thread D	Weight Kg
15	110	76	88	G 3/4B	0.59



WORKING CONDITION:

- Water temperature: ≤50°C for cold water meter
- Water temperature: ≤90°C for hot water meter
- Working pressure: ≤1.6Mpa

wellmeter

Ningbo Well Energy Technology Co.,Ltd
<https://www.well-meters.com>
sales@well-meters.com
 +86-574-63702808

Model: LXDGY-13C-25C

Pulse Output Water Meter



Feature:

- Single jet, Dry-dial
- Material body: Brass
- Size: DN15 to DN25mm, (1/2" – 1")
- Available for cold water (50°C), hot water (90°C)
- Accuracy: Class B / R80 / R100
- Pulse output reading: 1 L/Pulse or 10 L/Pulse

Main Technical Data:

According to ISO4064 (GB/T778.1-1996) Standard

Size		Class	Qs	Qp	Qt	Qmin	Min reading	Max reading
DN(mm)	Inch		Overload flow	Nominal flow	Transitional flow	Min flow		
		m ³ /h			L/h		m ³	
15	1/2"	A	3	1.5	150	60	0.0001	99999
		B			120	30		
20	3/4"	A	5	2.5	250	100	0.0001	99999
		B			200	50		
25	1"	A	7	3.5	350	140	0.0001	99999
		B			280	70		

According to ISO4064 (GB/T778.1-2007) Standard

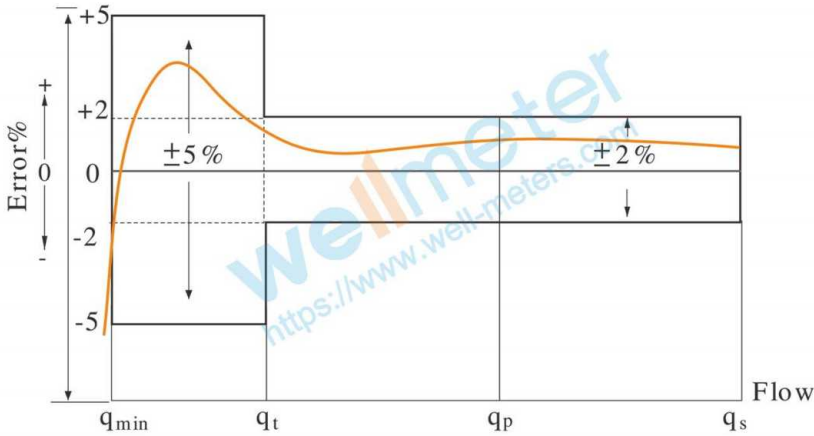
DN SIZE	Mm Inch	15 1/2"	20 3/4"	25 1"
Q4(m ³ /h)		3.125	5	7.875
Q3(m ³ /h)		2.5	4	6.3
R80	Q2(L/h)	50	80	126
	Q1(L/h)	31.25	50	78.75
R100	Q2(L/h)	40	64	100.8
	Q1(L/h)	25	40	63
Min reading(m ³)		0.0001	0.0001	0.0001
Max reading(m ³)		99999	99999	99999
Max pressure(MAP)		16	16	16
Max loss(Δ P)		63	63	63
Max temperature		T50	T50	T50

Model: LXDGY-13C-25C

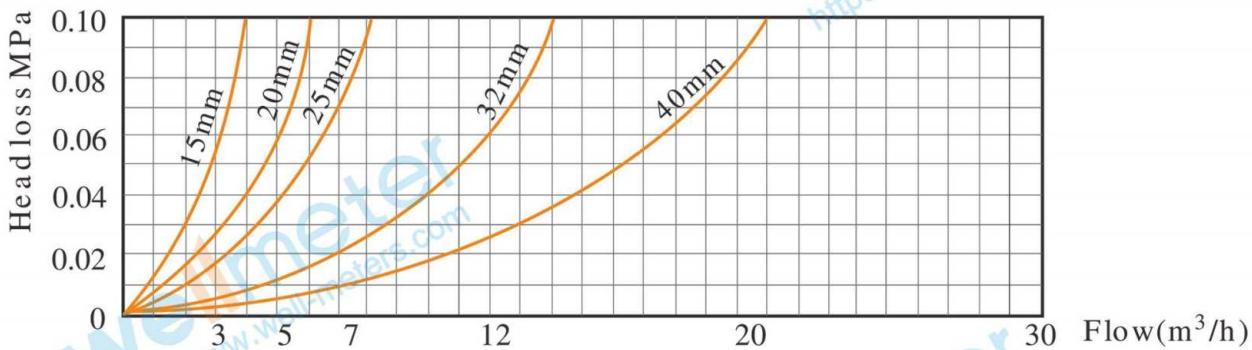
INDICATING ERROR

At low zone is $\pm 5\%$ from minimum flow rate (q_{min}) to transitional flow rate (q_t) exclusive boundary

At high zone is $\pm 2\%$ from transitional flow rate (q_t) to overload flow rate (q_s)

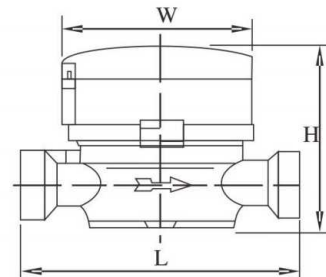


Head Loss Curve:



Dimensions and Weight:

Meter size Dia DN (mm)	L Length mm	W Width mm	H Height mm	Connecting Thread D	Weight Kg
15	110	80	80	G 3/4B	0.7
20	130	80	80	G 1B	0.95
25	160	80	93	G1 1/4B	1.4



WORKING CONDITION:

Water temperature: $\leq 50^\circ\text{C}$ for cold water meter

Water temperature: $\leq 90^\circ\text{C}$ for hot water meter

Working pressure: $\leq 1.6\text{Mpa}$

wellmeter

Ningbo Well Energy Technology Co.,Ltd

<https://www.well-meters.com>

sales@well-meters.com

+86-574-63702808

Model: LXDGY-13A

Pulse Output Water Meter

Feature:

- Single jet, Dry-dial
- Material body: Nylon plastic
- Size: DN15mm, (1/2")
- Available for cold water (50°C)
- Accuracy: Class B / R80 / R100
- Pulse output reading: 10 L/Pulse



Main Technical Data:

According to ISO4064 (GB/T778.1-1996) Standard

Size		Class	Qs	Qp	Qt	Qmin	Min reading	Max reading
DN(mm)	Inch		Overload flow	Nominal flow	Transitional flow	Min flow		
		m ³ /h			L/h		m ³	
15	1/2"	A	3	1.5	150	60	0.0001	99999
		B			120	30		

According to ISO4064 (GB/T778.1-2007) Standard

DN SIZE	Mm Inch	15 1/2"
Q4(m ³ /h)		3.125
Q3(m ³ /h)		2.5
R80	Q2(L/h)	50
	Q1(L/h)	31.25
R100	Q2(L/h)	40
	Q1(L/h)	25
Min reading(m ³)		0.0001
Max reading(m ³)		99999
Max pressure(MAP)		16
Max loss(Δ P)		63
Max temperature		T50

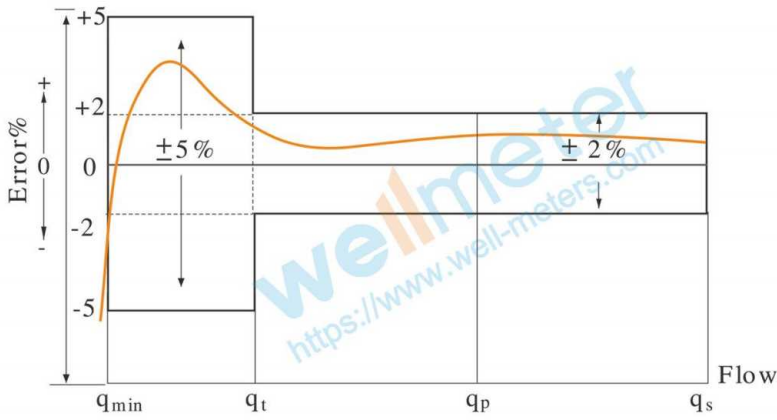
INDICATING ERROR

At low zone is ±5% from minimum flow rate (qmin) to transitional flow rate (qt) exclusive boundary

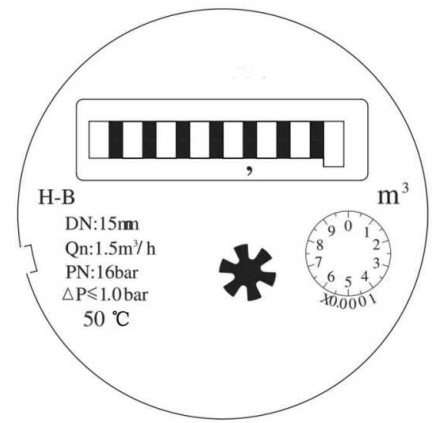
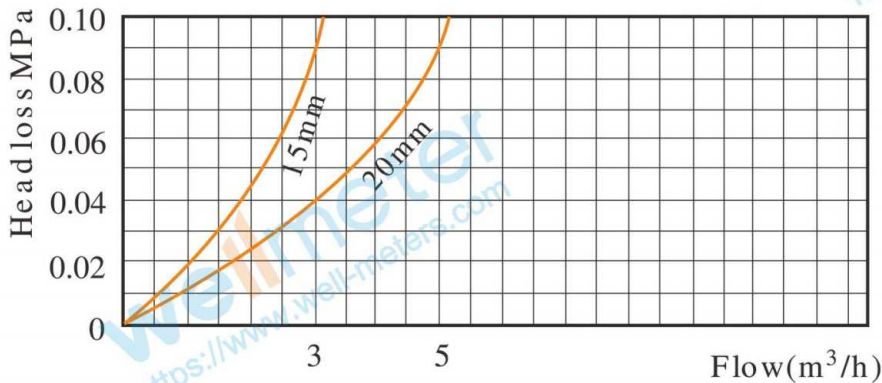
At high zone is ±2% from transitional flow rate (qt) to overload flow rate (qs)

Model: LXDGY-13A

Error Curve:

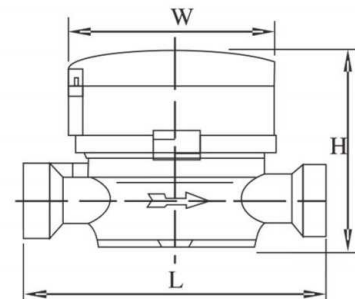


Head Loss Curve:



Dimensions and Weight:

Meter size Dia DN (mm)	L Length	W Width	H Height	Connecting Thread D	Weight Kg
15	110	80	80	G 3/4B	0.35



WORKING CONDITION:

Water temperature: ≤50°C for cold water meter

Working pressure: ≤1.6Mpa

wellmeter

Ningbo Well Energy Technology Co.,Ltd

<https://www.well-meters.com>

sales@well-meters.com

+86-574-63702808

Model: LXLCY-50-500

Pulse Output Water Meter

Feature:

- Woltman type, Dry-dial
- Material body: Gray cast iron / Ductile cast iron
- Size: DN50 to DN500mm, (2" – 20")
- Available for cold water (50°C), hot water (90°C)
- Accuracy: Class B standard
- Pulse output reading: 100 L/pulse; 1000 L/pulse



Main Technical Data:

According to ISO4064 (GB/T778.1-1996) Standard

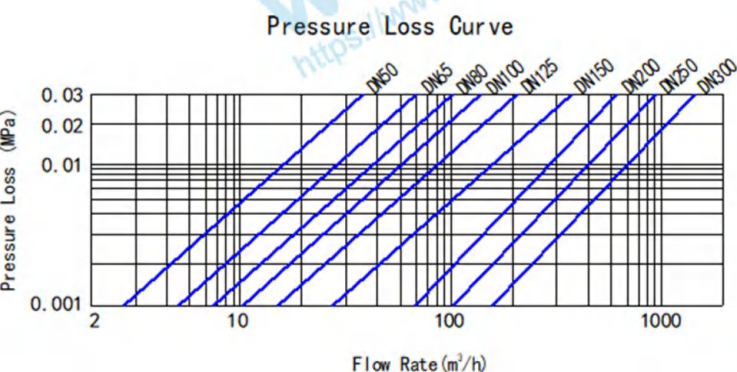
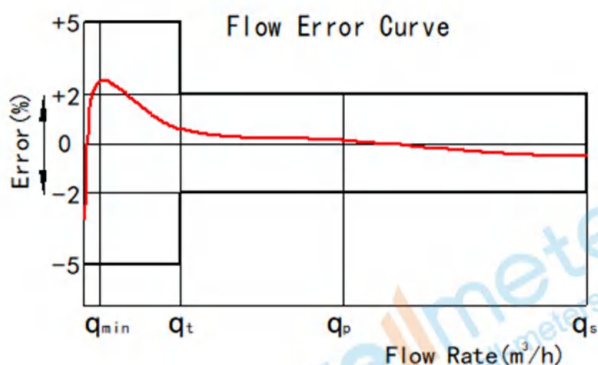
Size		Class	Qs	Qp	Qt	Qmin	Min reading	Max reading
DN(mm)	Inch		Overload flow	Nominal flow	Transitional flow	Min flow		
		m ³ /h					m ³	
50	2"	B	30	15	3	0.45	0.01	999999
65	2.5"	B	50	25	5	0.75	0.01	999999
80	3"	B	80	40	8	1.2	0.01	999999
100	4"	B	120	60	12	1.8	0.01	999999
125	5"	B	200	100	20	3	0.01	999999
150	6"	B	300	150	30	4.5	0.01	999999
200	8"	B	500	250	50	7.5	0.01	999999
250	10"	B	800	400	80	12	0.01	9999999
300	12"	B	1200	600	120	18	0.01	9999999
400	16"	B	2000	1000	200	30	0.01	9999999
500	20"	B	3000	1500	300	45	0.01	9999999

INDICATING ERROR

At low zone is $\pm 5\%$ from minimum flow rate (qmin) to transitional flow rate (qt) exclusive boundary

At high zone is $\pm 2\%$ from transitional flow rate (qt) to overload flow rate (qs)

Model: LXLCY-50-500

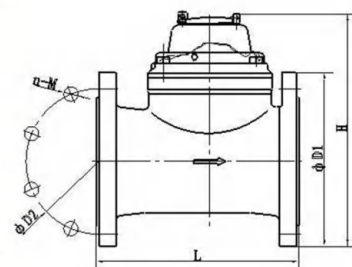


Code	Description	Material	QTY
1	Screw For Sealing	Stainless Steel	2
2	Cover With Lid	Assembly	1
3	Sealed Register	Assembly	1
4	Position Pin	Stainless Steel	1
5	Lead Seal Bolt	Stainless Steel	2
6	Adjusting Nut	Brass	1
7	Gasket	Brass	1
8	Flange Cover	GGG40 ductile Iron	1
9	O-ring	Silicon Rubber	1
10	Bush	Brass	1
11	Gasket	Synthetic Rubber	1
12	Adjusting Lever	Brass	1
13	Connecting Lever	MPPPO	1
14	Adjusting Plate	MPPPO	1
15	Support	MPPPO	1
16	Bolt	Brass	1
17	Turbine Component	Assembly	1
18	Rectifier	MPPPO	1
19	Screw	Brass	1
20	O-ring	Synthetic Rubber	1
21	Body	GGG40 ductile Iron	1
22	Screw M4×20	Stainless Steel	2
23	Gasket	Stainless Steel	3
24	Retainer	ABS	1
25	Fixing pin	Brass	1
26	Screw	Brass	4
27	Support	ABS	1
28	Bolt M12×35	Stainless Steel	2
29	Gasket	Stainless Steel	4
30	Upper Bearing Plate	Brass	1
31	Upper Bearing	Nylon With Graphite	1
32	Magnet Component	Component	1
33	Transmission Shaft	Stainless Steel	1
34	Sheath	MPPPO	2
35	Bevel Gear	Nylon	1
36	Lower Bearing	Nylon With Graphite	1
37	Gasket	Brass	4
38	Screw	Brass	3
39	Nut	Brass	1
40	Gasket	Brass	1
41	Turbine Shaft Hold	Brass	1
42	Turbine Shaft	Tungsten Steel	1



Dimensions and Weight:

Meter size Dia DN	L Length	B Width	H Height	Connecting Thread			Weight KG
				D	Bolt Circle Dia D1	Conncting Bolt	
(mm)		mm					
50	200	175	257	165	125	4×M16	12
65	200	185	267	185	145	4×M16	13
80	225	200	277	200	160	8×M16	15
100	250	220	287	220	180	8×M16	19
125	250	245	297	245	210	8×M16	22
150	250	285	375	285	240	8×M20	47
200	350	345	400	340	295	8×M20	48
250	450	395	484	395	350	8×M20	110
300	450	445	506	445	400	12×M20	115
400	500	565	621	565	515	16×M24	180
500	500	670	725	670	620	20×M24	330



WORKING CONDITION:

Water temperature: ≤50°C for cold water meter

Water temperature: ≤90°C for hot water meter

Working pressure: ≤1.6Mpa

wellmeter

Ningbo Well Energy Technology Co.,Ltd

<https://www.well-meters.com>

sales@well-meters.com

+86-574-63702808

Model: LXXG-50-300

Pulse Output Water Meter

Feature:

- Irrigation water meter, Dry-dial
- Material body: Gray cast iron
- Size: DN50 to DN300mm, (2" – 12")
- Available for cold water (50°C)
- Accuracy: Class A standard
- Pulse output reading: 100 L/pulse; 1000 L/pulse



Main Technical Data:

According to ISO4064 (GB/T778.1-1996) Standard

Size mm	Class	Qs Overload Flow	Qp Permanent Flow	Qt Transitional Flow	Qmin Min Flow	Min Reading	Max Reading
		m3/h					
50	A	30	15	4.5	1.2	0.0002	999,999
65	A	50	25	7.5	2.0	0.002	999,999
80	A	80	40	12	3.2	0.002	999,999
100	A	120	60	18	4.8	0.002	999,999
125	A	200	100	30	8	0.002	999,999
150	A	300	150	45	12	0.002	999,999
200	A	500	250	75	20	0.002	999,999
250	A	800	400	120	32	0.02	9,999,999
300	A	1200	600	180	48	0.02	9,999,999

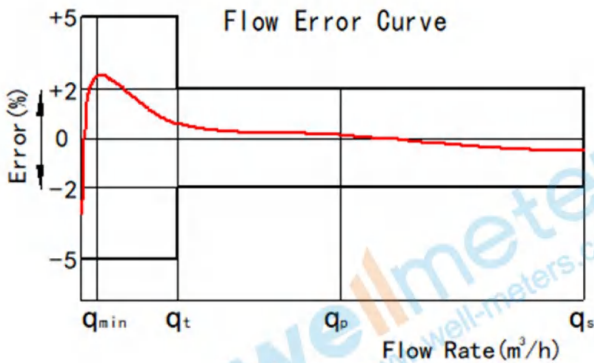
INDICATING ERROR

At low zone is $\pm 5\%$ from minimum flow rate (q_{min}) to transitional flow rate (q_t) exclusive boundary
 At high zone is $\pm 2\%$ from transitional flow rate (q_t) to overload flow rate (q_s)

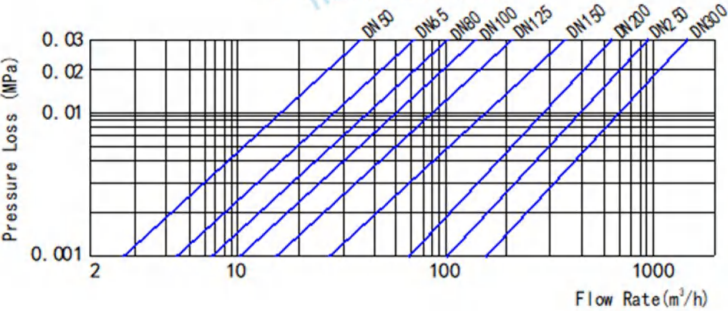
WORKING CONDITION:

Water temperature: $\leq 50^\circ\text{C}$ for cold water meter
 Water temperature: $\leq 90^\circ\text{C}$ for hot water meter
 Working pressure: $\leq 1.6\text{Mpa}$

Model: LXXG-50-300



Pressure Loss Curve



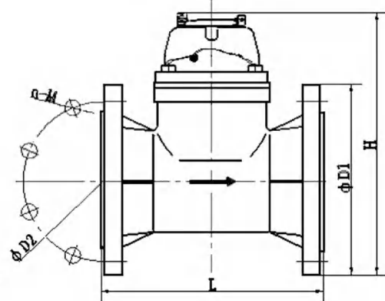
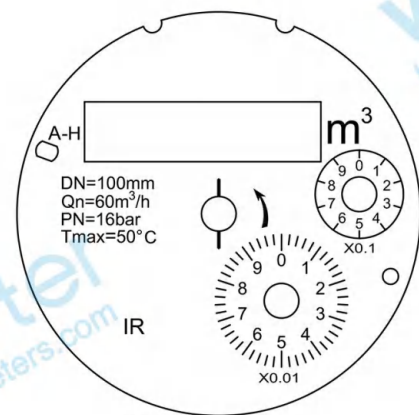
Code	Description	Material	QTY
1	Screw M5×45 For Sealing	Stainless Steel	1
2	Screw M5×45	Stainless Steel	1
3	Cover With Lid	Assembly	1
4	Sealed Register	Assembly	1
5	Fixing pin	Brass	1
6	Retainer Ring	ABS	1
7	Screw	Brass	4
8	Pin	Stainless Steel	1
9	Support	ABS	1
10	Bolt For Sealing	Stainless Steel	2
11	Bolt M12×35	Stainless Steel	2
12	Gasket	Stainless Steel	4
13	Adjusting Nut	Brass	1
14	Flange Plate	Cast Iron	1
15	O-ring	Silicon Rubber	1
16	O-ring	Silicon Rubber	1
17	Bush For Adjustment	Brass	1
18	Upper Bearing Plate	Brass	1
19	Screw	Brass	4
20	Lower Central Gear	Component	1
21	Cover Plate	MPPO	1
22	O-ring For Adjustment	Rubber	2
23	Transmission Gear	Assembly	1
24	Adjusting Lever	Brass	1
25	Turbine	Component	1
26	Adjusting Plate	MPPO	1
27	Bush with Agate	Nylon with Graphite	1
28	Measuring Chamber	MPPO	1
29	Fixing Screw	Brass	3
30	O-ring	Rubber	1
31	Body	Cast Iron	1



Dimensions and Weight:

Size	L Length	H Height	Connecting Flange		
			Outside Diameter D1	Bolt Circle D2	Connecting Bolt
50	200	253	165	125	4-M16
65	200	268	185	145	4-M16
80	225	284	200	160	8-M16
100	250	295	220	180	8-M16
125	250	310	250	210	8-M16
150	300	339	285	240	8-M20
200	350	382	340	295	8-M20(1.0MPa)
					12-M20(1.6MPa)
250	400	433	395	350	12-M20(1.0MPa)
	450	438	405	355	12-M24(1.6MPa)
300	450	483	445	400	12-M20(1.0MPa)
	500	488	460	410	12-M24(1.6MPa)

NOTE: The flange dimension conforms to ISO7005-2:1988 standard. Order for products of special requirements is also accepted.



wellmeter

Ningbo Well Energy Technology Co.,Ltd
<https://www.well-meters.com>
 sales@well-meters.com
 +86-574-63702808