

**Model: LXSG-15E3-20E3**

**Multi Jet Water Meter**



### Feature:

- Multi jet, Dry-dial
- Material body: Brass
- Size: DN15 to DN20mm, (1/2" – 3/4")
- Available for cold water (50°C), hot water (90°C)
- Accuracy: Class B / R80 / R100

### Main Technical Data:

According to ISO4064 (GB/T778.1-1996) Standard

Size		Class	Qs	Qp	Qt	Qmin	Min reading	Max reading
DN(mm)	Inch		Overload flow	Nominal flow	Transitional flow	Min flow		
		m <sup>3</sup> /h			L/h		m <sup>3</sup>	
15	1/2"	A	3	1.5	150	60	0.0001	9999
		B			120	30		
20	3/4"	A	5	2.5	250	100	0.0001	9999
		B			200	50		

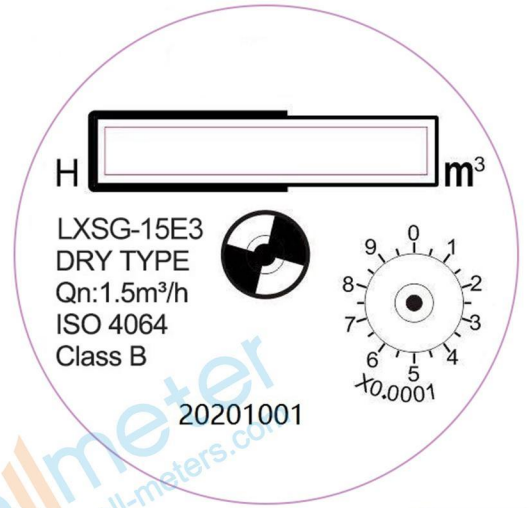
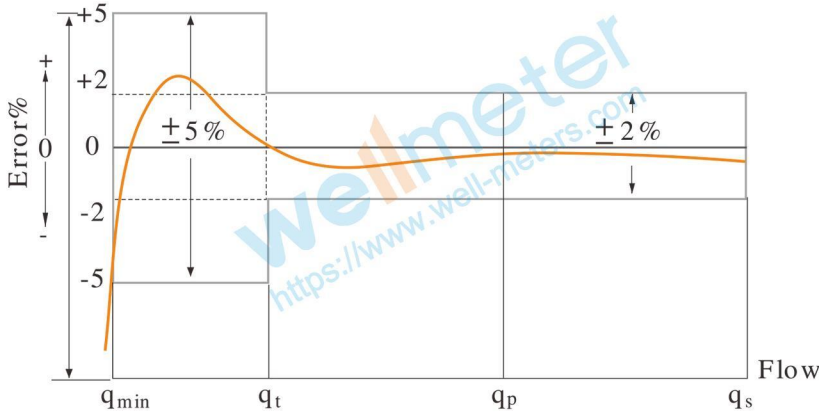
According to ISO4064 (GB/T778.1-2007) Standard

DN SIZE	Mm Inch	15 1/2"	20 3/4"
Q4(m <sup>3</sup> /h)		3.125	5
Q3(m <sup>3</sup> /h)		2.5	4
R80	Q2(L/h)	50	80
	Q1(L/h)	31.25	50
R100	Q2(L/h)	40	64
	Q1(L/h)	25	40
Min reading(m <sup>3</sup> )		0.0001	0.0001
Max reading(m <sup>3</sup> )		9999	9999
Max pressure(MAP)		16	16
Max loss(Δ P)		63	63
Max temperature		T50	T50

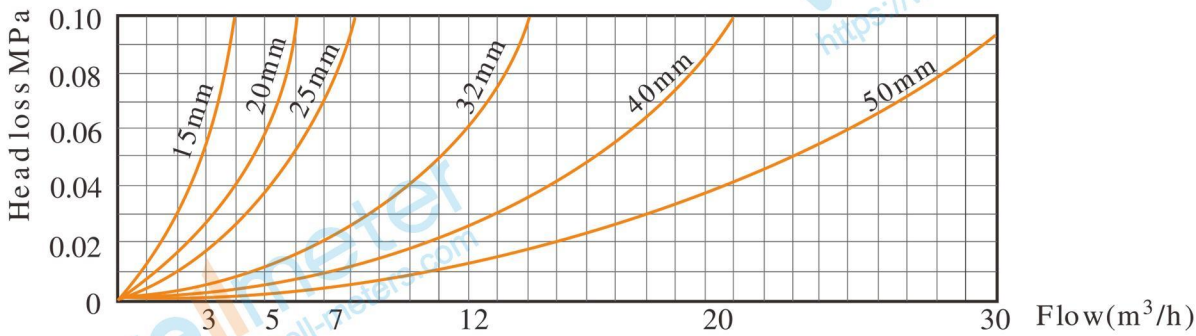
# Model: LXSG-15E3-50E3

## INDICATING ERROR

At low zone is  $\pm 5\%$  from minimum flow rate ( $q_{min}$ ) to transitional flow rate ( $q_t$ ) exclusive boundary  
 At high zone is  $\pm 2\%$  from transitional flow rate ( $q_t$ ) to overload flow rate ( $q_s$ )

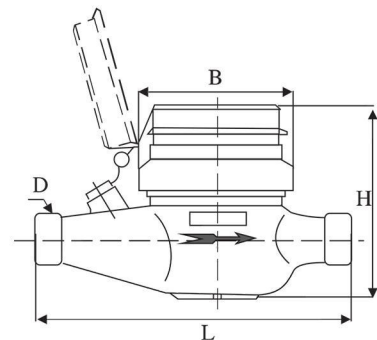


## Head Loss Curve:



## Dimensions and Weight:

Meter size Dia DN (mm)	L Length	B Width	H Height	Connecting Thread D	Weight Kg
	mm				
15	165	80	102	G3/4B	1.1
20	190	80	105	G 1B	1.4



## WORKING CONDITION:

Water temperature:  $\leq 50^\circ\text{C}$  for cold water meter  
 Water temperature:  $\leq 90^\circ\text{C}$  for hot water meter  
 Working pressure:  $\leq 1.6\text{Mpa}$

**wellmeter**

Ningbo Well Energy Technology Co.,Ltd  
<https://www.well-meters.com>  
[sales@well-meters.com](mailto:sales@well-meters.com)  
 +86-574-63702808