

Model: LXLN-50E-300E

Irrigation Water Meter

Feature:

- Irrigation water meter, Dry-dial
- Material body: Gray cast iron
- Size: DN50 to DN300mm, (2" – 12")
- Available for cold water (50°C)
- Accuracy: Class A standard



Main Technical Data:

According to ISO4064 (GB/T778.1-1996) Standard

Size mm	Class	Qs	Qp	Qt	Qmin	Min Reading	Max Reading
		Overload Flow	Permanent Flow	Transitional Flow	Min Flow		
		m3/h				m3	
50	A	30	15	4.5	1.2	0.0002	999,999
65	A	50	25	7.5	2.0	0.002	999,999
80	A	80	40	12	3.2	0.002	999,999
100	A	120	60	18	4.8	0.002	999,999
125	A	200	100	30	8	0.002	999,999
150	A	300	150	45	12	0.002	999,999
200	A	500	250	75	20	0.002	999,999
250	A	800	400	120	32	0.02	9,999,999
300	A	1200	600	180	48	0.02	9,999,999

INDICATING ERROR

At low zone is $\pm 5\%$ from minimum flow rate (q_{min}) to transitional flow rate (q_t) exclusive boundary
 At high zone is $\pm 2\%$ from transitional flow rate (q_t) to overload flow rate (q_s)

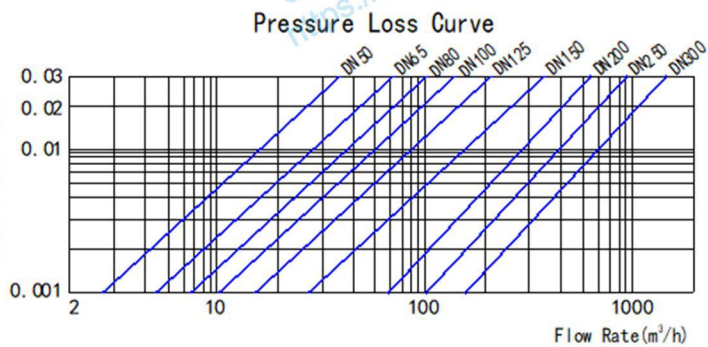
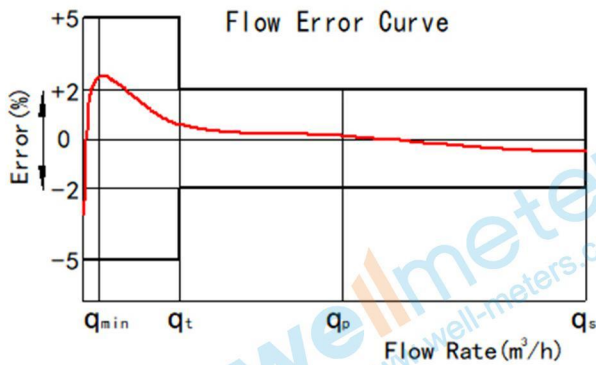
WORKING CONDITION:

Water temperature: $\leq 50^\circ\text{C}$ for cold water meter

Water temperature: $\leq 90^\circ\text{C}$ for hot water meter

Working pressure: $\leq 1.6\text{Mpa}$

Model: LXLN-50E-300E



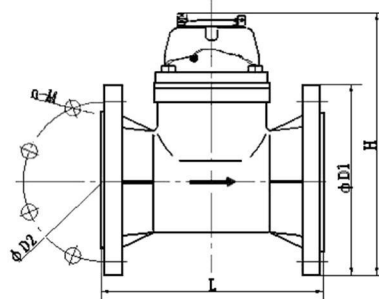
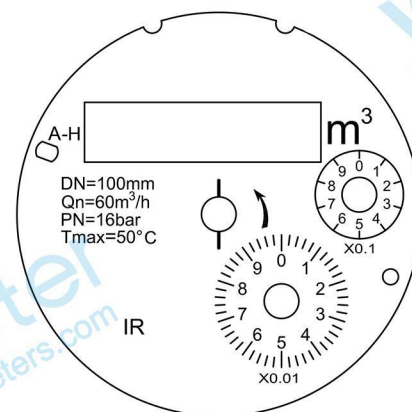
Code	Description	Material	QTY
1	Screw M5×45 For Sealing	Stainless Steel	1
2	Screw M5×45	Stainless Steel	1
3	Cover With Lid	Assembly	1
4	Sealed Register	Assembly	1
5	Fixing pin	Brass	1
6	Retainer Ring	ABS	1
7	Screw	Brass	4
8	Pin	Stainless Steel	1
9	Support	ABS	1
10	Bolt For Sealing	Stainless Steel	2
11	Bolt M12×35	Stainless Steel	2
12	Gasket	Stainless Steel	4
13	Adjusting Nut	Brass	1
14	Flange Plate	Cast Iron	1
15	O-ring	Silicon Rubber	1
16	O-ring	Silicon Rubber	1
17	Bush For Adjustment	Brass	1
18	Upper Bearing Plate	Brass	1
19	Screw	Brass	4
20	Lower Central Gear	Component	1
21	Cover Plate	MPPO	1
22	O-ring For Adjustment	Rubber	2
23	Transmission Gear Component	Assembly	1
24	Adjusting Lever	Brass	1
25	Turbine	Component	1
26	Adjusting Plate	MPPO	1
27	Bush with Agate	Nylon with Graphite	1
28	Measuring Chamber	MPPO	1
29	Fixing Screw	Brass	3
30	O-ring	Rubber	1
31	Body	Cast Iron	1



Dimensions and Weight:

Size	L Length	H Height	Connecting Flange		
			Outside Diameter D1	Bolt Circle D2	Connecting Bolt
50	200	253	165	125	4-M16
65	200	268	185	145	4-M16
80	225	284	200	160	8-M16
100	250	295	220	180	8-M16
125	250	310	250	210	8-M16
150	300	339	285	240	8-M20
200	350	382	340	295	8-M20(1.0MPa)
					12-M20(1.6MPa)
250	400	433	395	350	12-M20(1.0MPa)
	450	438	405	355	12-M24(1.6MPa)
300	450	483	445	400	12-M20(1.0MPa)
	500	488	460	410	12-M24(1.6MPa)

NOTE: The flange dimension conforms to ISO7005-2:1988 standard. Order for products of special requirements is also accepted.



wellmeter

Ningbo Well Energy Technology Co.,Ltd
<https://www.well-meters.com>
sales@well-meters.com
 +86-574-63702808