

Model: LXH-15A4-20A4

Volumetric Water Meter

Feature:

- Volumetric piston type
- Material body: Brass
- Size: DN15 to DN20mm, (1/2" – 3/4")
- Available for cold water (50°C)
- Accuracy: Class C / R160 / R200



Volumetric

Main Technical Data:

According to ISO4064 (GB/T778.1-1996) Standard

Size		Class	Qs	Qp	Qt	Qmin	Min reading	Max reading
DN(mm)	Inch		Overload flow	Nominal flow	Transitional flow	Min flow		
			m³/h		L/h		m³	
15	1/2"	C	3	1.5	22.5	15	0.0001	99999
20	3/4"	C	5	2.5	37.5	25	0.0001	99999

According to ISO4064 (GB/T778.1-2007) Standard

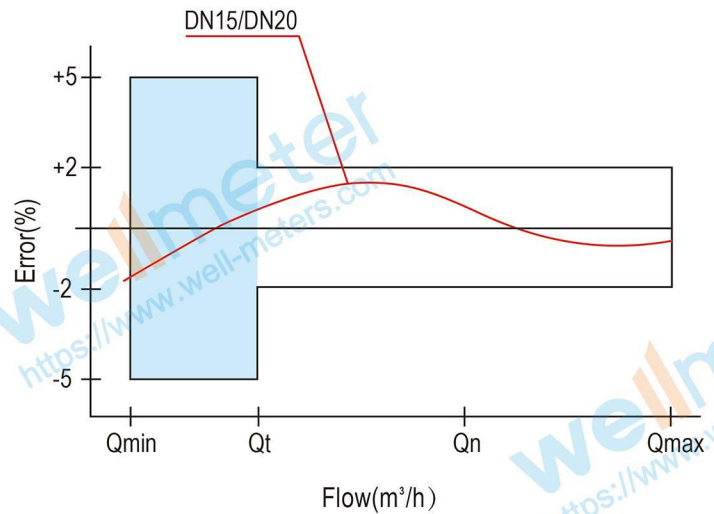
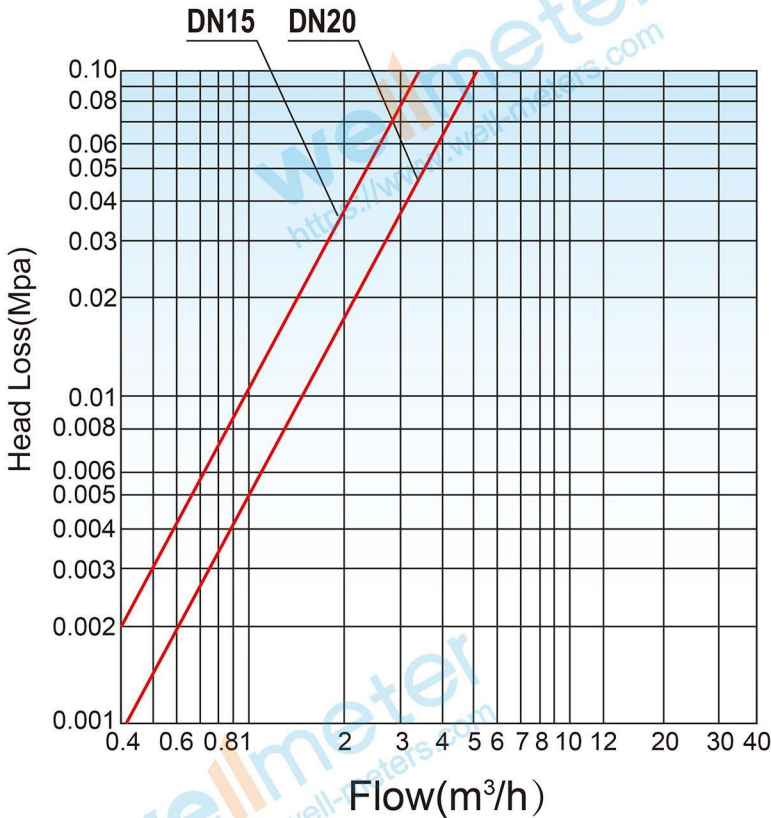
DN SIZE	Mm Inch	15 1/2"	20 3/4"
Q4(m³/h)		3.125	5
Q3(m³/h)		2.5	4
R160	Q2(L/h)	25	40
	Q1(L/h)	15.625	25
R200	Q2(L/h)	20	32
	Q1(L/h)	12.5	20
Min reading(m³)		0.0001	0.0001
Max reading(m³)		99999	99999
Max pressure(MAP)		16	16
Max loss(Δ P)		63	63
Max temperature		T50	T50

Model: LXH-15A4-20A4

INDICATING ERROR

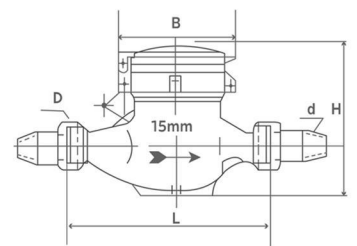
At low zone is $\pm 5\%$ from minimum flow rate (q_{min}) to transitional flow rate (q_t) exclusive boundary
 At high zone is $\pm 2\%$ from transitional flow rate (q_t) to overload flow rate (q_s)

Head Loss and Error Curve:



Dimensions and Weight:

Meter size Dia DN (mm)	L Length	B Width	H Height	Connecting Thread D	Weight Kg
15	165	95	121	G 3/4B	1.4
20	190	95	121	G 1B	1.7



WORKING CONDITION:

Water temperature: $\leq 50^\circ\text{C}$ for cold water meter
 Working pressure: $\leq 1.6\text{Mpa}$

wellmeter

Ningbo Well Energy Technology Co.,Ltd
<https://www.well-meters.com>
sales@well-meters.com
 +86-574-63702808