

Model: LXDG-13-25

## Single Jet Water Meter

### Feature:

- Single jet, Dry-dial
- Material body: Brass
- Size: DN15 to DN25mm, (1/2" – 1")
- Available for cold water (50°C), hot water (90°C)
- Accuracy: Class B / R80 / R100



### Main Technical Data:

According to ISO4064 (GB/T778.1-1996) Standard

Size		Class	Qs	Qp	Qt	Qmin	Min reading	Max reading
DN(mm)	Inch		Overload flow	Nominal flow	Transitional flow	Min flow		
		m <sup>3</sup> /h			L/h		m <sup>3</sup>	
15	1/2"	B	3	1.5	120	30	0.0001	99999
20	3/4"	B	5	2.5	200	50	0.0001	99999
25	1"	B	7	3.5	280	70	0.0001	99999

According to ISO4064 (GB/T778.1-2007) Standard

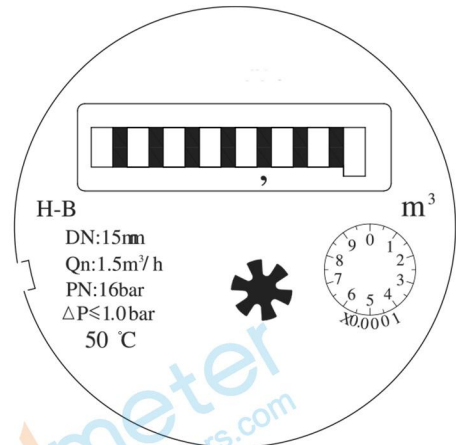
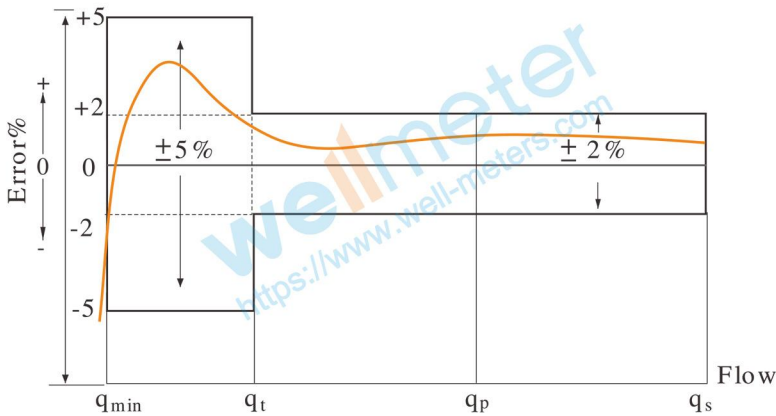
DN SIZE	Mm Inch	15 1/2"	20 3/4"	25 1"
Q4(m <sup>3</sup> /h)		3.125	5	7.875
Q3(m <sup>3</sup> /h)		2.5	4	6.3
R80	Q2(L/h)	50	80	126
	Q1(L/h)	31.25	50	78.75
R100	Q2(L/h)	40	64	100.8
	Q1(L/h)	25	40	63
Min reading(m <sup>3</sup> )		0.0001	0.0001	0.0001
Max reading(m <sup>3</sup> )		99999	99999	99999
Max pressure(MAP)		16	16	16
Max loss(Δ P)		63	63	63
Max temperature		T50	T50	T50

### INDICATING ERROR

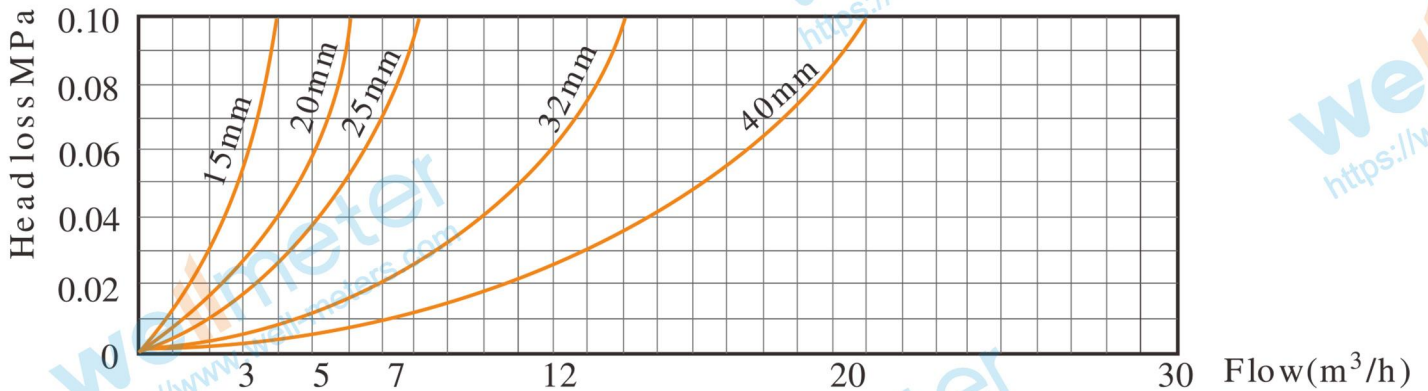
At low zone is ±5% from minimum flow rate (qmin) to transitional flow rate (qt) exclusive boundary

At high zone is ±2% from transitional flow rate (qt) to overload flow rate (qs)

**Model: LXDG-13-25**

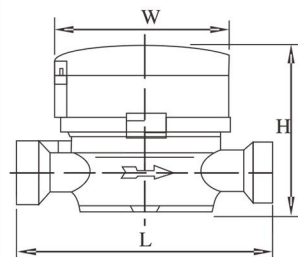


### Head Loss Curve:



### Dimensions and Weight:

Meter size Dia DN (mm)	L Length	W Width	H Height	Connecting Thread D	Weight Kg
15	110	77	80	G 3/4B	0.57
20	130	77	80	G 1B	0.67
25	160	77	85	G1 1/4B	0.91



### WORKING CONDITION:

- Water temperature:  $\leq 50^{\circ}\text{C}$  for cold water meter
- Water temperature:  $\leq 90^{\circ}\text{C}$  for hot water meter
- Working pressure:  $\leq 1.6\text{Mpa}$

**wellmeter**

Ningbo Well Energy Technology Co.,Ltd  
<https://www.well-meters.com>  
[sales@well-meters.com](mailto:sales@well-meters.com)  
 +86-574-63702808