

Model: LXDG-13B-25B

## Single Jet Water Meter



### Feature:

- Single jet, Dry-dial
- Material body: Brass
- Size: DN15 to DN25mm, (1/2" – 1")
- Available for cold water (50°C), hot water (90°C)
- Accuracy: Class C / R160

### Main Technical Data:

According to ISO4064 (GB/T778.1-1996) Standard

| Size   |      | Class             | Qs            | Qp           | Qt                | Qmin     | Min reading    | Max reading |
|--------|------|-------------------|---------------|--------------|-------------------|----------|----------------|-------------|
| DN(mm) | Inch |                   | Overload flow | Nominal flow | Transitional flow | Min flow |                |             |
|        |      | m <sup>3</sup> /h |               |              | L/h               |          | m <sup>3</sup> |             |
| 15     | 1/2" | C                 | 3             | 1.5          | 22.5              | 15       | 0.0001         | 99999       |
| 20     | 3/4" | C                 | 5             | 2.5          | 37.5              | 25       | 0.0001         | 99999       |
| 25     | 1"   | C                 | 7             | 3.5          | 52.5              | 35       | 0.0001         | 99999       |

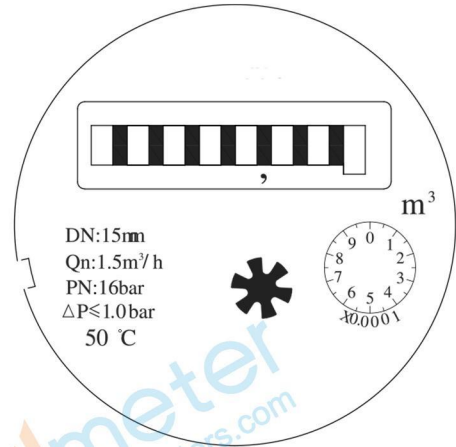
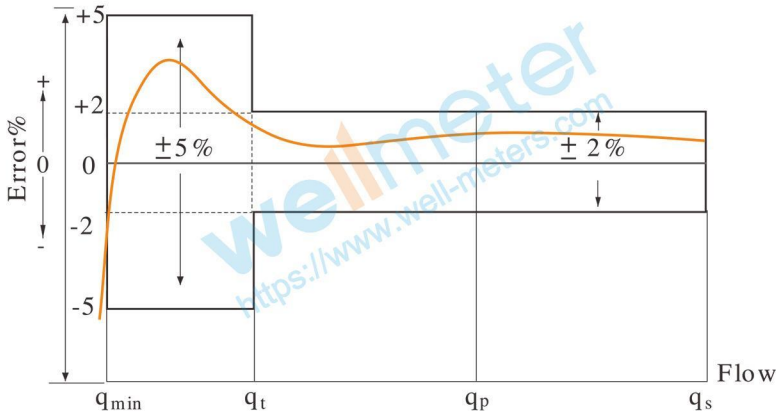
According to ISO4064 (GB/T778.1-2007) Standard

| DN<br>SIZE                   | Mm<br>Inch | 15<br>1/2" | 20<br>3/4" | 25<br>1" |
|------------------------------|------------|------------|------------|----------|
| Q4(m <sup>3</sup> /h)        |            | 3.125      | 5          | 7.875    |
| Q3(m <sup>3</sup> /h)        |            | 2.5        | 4          | 6.3      |
| R160                         | Q2(L/h)    | 25         | 40         | 63       |
|                              | Q1(L/h)    | 15.625     | 25         | 39.375   |
| Min reading(m <sup>3</sup> ) |            | 0.0001     | 0.0001     | 0.0001   |
| Max reading(m <sup>3</sup> ) |            | 99999      | 99999      | 99999    |
| Max pressure(MAP)            |            | 16         | 16         | 16       |
| Max loss(Δ P)                |            | 63         | 63         | 63       |
| Max temperature              |            | T50        | T50        | T50      |

### INDICATING ERROR

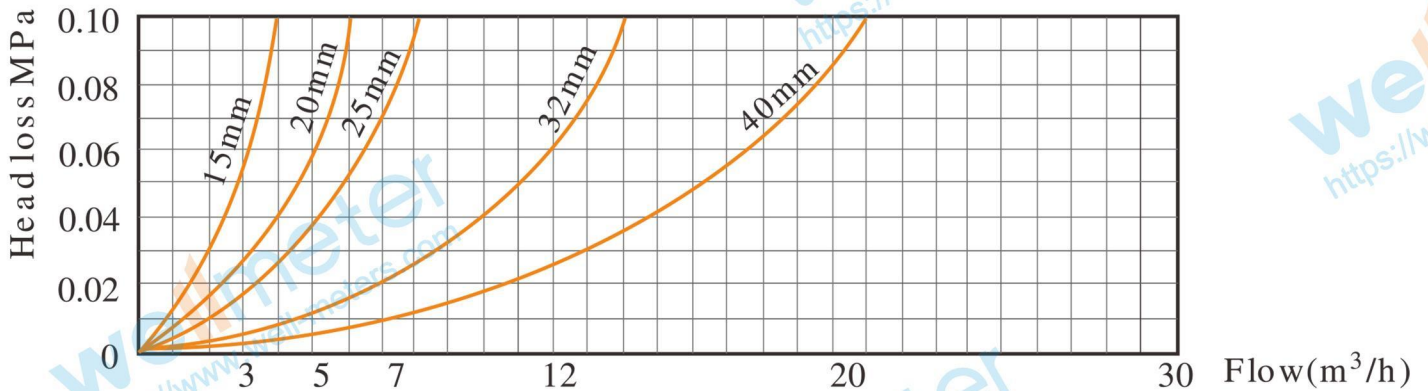
At low zone is ±5% from minimum flow rate (qmin) to transitional flow rate (qt) exclusive boundary  
 At high zone is ±2% from transitional flow rate (qt) to overload flow rate (qs)

**Model: LXDG-13B-25B**



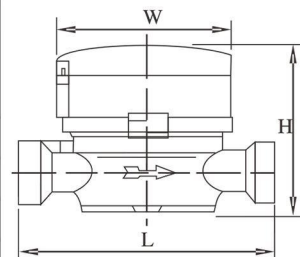
DN:15mm  
 Qn:1.5m<sup>3</sup>/h  
 PN:16bar  
 $\Delta P \leq 1.0$ bar  
 50 °C

**Head Loss Curve:**



**Dimensions and Weight:**

| Meter size<br>Dia<br>DN<br>(mm) | L<br>Length<br>mm | W<br>Width<br>mm | H<br>Height<br>mm | Connecting Thread<br>D | Weight<br>Kg |
|---------------------------------|-------------------|------------------|-------------------|------------------------|--------------|
| 15                              | 110               | 77               | 80                | G 3/4B                 | 0.57         |
| 20                              | 130               | 77               | 80                | G 1B                   | 0.67         |
| 25                              | 160               | 77               | 85                | G1 1/4B                | 0.91         |



**WORKING CONDITION:**

Water temperature:  $\leq 50^\circ\text{C}$  for cold water meter  
 Water temperature:  $\leq 90^\circ\text{C}$  for hot water meter  
 Working pressure:  $\leq 1.6\text{Mpa}$

**wellmeter**

Ningbo Well Energy Technology Co.,Ltd  
<https://www.well-meters.com>  
[sales@well-meters.com](mailto:sales@well-meters.com)  
 +86-574-63702808