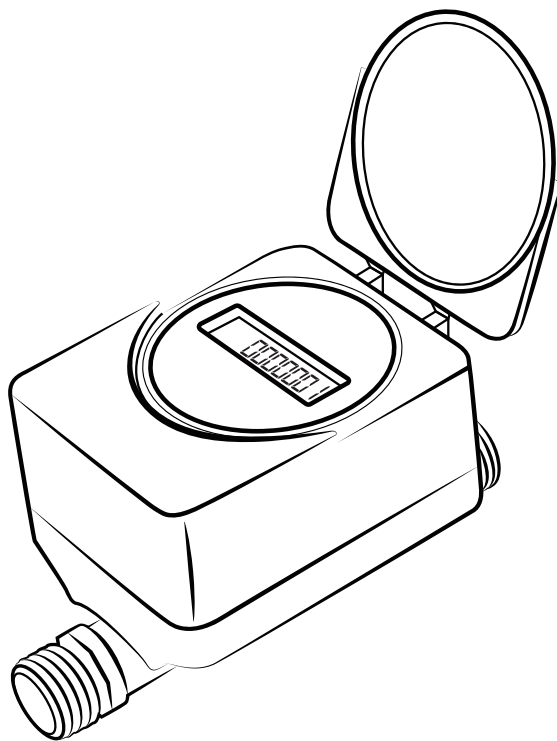


ULTRASONIC WATER METER

Communication Interface

M-bus
RS485
Pulse Output
LoRa
LoRaWAN
NB-IoT



WATER METER

ULTRASONIC

MODEL NO.:

LXC-15G-40G

50°C ISO 4064 DN15~40 mm



LXC-15G-40G

DN15-DN40

Communication: M-BUS, RS-485, Pulse output, LoRa, LoRaWAN, NB-IoT

Accuracy: R400/ R250

Frequency: LoRa/ LoRaWAN 865MHz, 902MHz, 868MHz, 915MHz, Customized Frequency Requirement

Unit: L/ m³/ Gal (Optional)

WATER METER

ULTRASONIC

LXC-15G-40G

TECHNICAL SPECIFICATION

Meter Type	Ultrasonic Water Meter
Nominal Diameter (mm)	DN15~DN40
Q3/Q1	DN15-DN25 R400,R250; DN32-DN40 R250
Measured medium	Water
Accuracy class	Class 2
Water pressure class	1.6MAP (16 bar)
Pressure-loss class	DN15/DN20:Δp40 DN25/DN32/DN40:Δp63
Temperature class	T50
Installation position	H/V
The installation sensitivity class	U0/D0
Electromagnetic class	E1
Environmental class	B
Key-press	Touch control technology
Types of Indicating device	LCD:9-digits, 0~99999.9999m ³
Menu Contents	Instantaneous flow (m ³ /h), cumulative flow (m ³), screen detection, table address, cumulative working time (h), date (year/month/day), caliber, software version
Communication Interface	M-BUS, RS-485, LoRa, LoRaWAN, Pulse output, NB-IoT
Power Source	Lithium battery ER26500(replaceable)
Battery Voltage & Capacity	3.6V , 8500mAh
Life span	10 years
IP code	IP68
Storage Temperature	-25°C~+55°C
Cable length	1.0 m

DIMENSIONS

Nominal Diameter (mm)	DN15	DN20	DN25	DN32	DN40
Thread	G3/4B	G1B	G1 1/4B	G1 1/2B	G2B
L(mm)	165	195	225	180	200
H(mm)	85	90	95	115	125
W(mm)	85	85	85	85	85

WORKING CONDITION

Water temperature: 0~50°C
Working pressure: ≤16 Bar

NINGBO WELL ENERGY TECHNOLOGY CO.,LTD.

ADD: No.21,Changxin Road, Jiangbei District, Ningbo, China
TEL: 0086-574-63702808
FAX: 0086-574-63706126
E-mail: sales@well-meters.com
Website: www.well-meters.com

WATER METER

ULTRASONIC

MODEL NO.:

LXC-15E-20E

50°C ISO 4064 DN15~20 mm



LXC-15E-20E

DN15-DN20, R250

Communication: M-BUS, RS-485, LoRa, LoRaWAN, NB-IoT

Frequency: LoRa/ LoRaWAN 865MHz, 902MHz, 868MHz, 915MHz, Customized Frequency Requirement

Valve control: Valve close/ open

Detection functions

Unit: L/ m³/ Gal (Optional)

WATER METER

ULTRASONIC

LXC-15E-20E

TECHNICAL SPECIFICATION

Meter Type	Ultrasonic Water Meter
Nominal Diameter (mm)	DN15~DN20
Q3/Q1	R250
Measured medium	Water
Accuracy class	Class 2
Frequency	865MHz, 902MHz, 868MHz, 915MHz, customized frequency requirement
Water pressure class	1.6MAP (16 bar)
Pressure-loss class	$\Delta p40$
Temperature class	T30,T50
Installation position	H/V
The installation sensitivity class	U5/D3
Electromagnetic class	E1
Environmental class	B
Key-press	Touch control technology
Types of Indicating device	LCD:8-digits, 0~99999.999m ³
Menu Contents	Instantaneous flow (m ³ /h), cumulative flow (m ³), screen detection, table address, cumulative working time (h), date (year/month/day), caliber, software version
Communication Interface	M-BUS, RS-485, LoRa, LoRaWAN, Pulse output, NB-IoT
Power Source	Lithium battery ER26500(replaceable)
Battery Voltage & Capacity	3.6V , 8500mAh
Life span	10 years
IP code	IP68
Storage Temperature	-25°C~+55°C
Cable length	1.0 m

DIMENSIONS

Nominal Diameter (mm)	DN15	DN20
Thread	G3/4B	G1B
L(mm)	165	195
H(mm)	98.2	98.2
W(mm)	102	102

WORKING CONDITION

Water temperature: 0~50°C
Working pressure: ≤16 Bar

NINGBO WELL ENERGY TECHNOLOGY CO.,LTD.

ADD: No.21,Changxin Road, Jiangbei District, Ningbo, China
TEL: 0086-574-63702808
FAX: 0086-574-63706126
E-mail: sales@well-meters.com
Website: www.well-meters.com

WATER METER

ULTRASONIC

MODEL NO.:

LXC-15B-25B

50°C ISO 4064 DN15~25 mm



LXC-15B-25B

DN15-DN25

Communication: M-BUS, RS-485, Pulse output, LoRa, LoRaWAN, NB-IoT

Accuracy: R250

Frequency: LoRa/ LoRaWAN 865MHz, 902MHz, 868MHz, 915MHz, Customized Frequency Requirement

Material: Composite Plastic

Unit: L/ m³/ Gal (Optional)

WATER METER

ULTRASONIC

LXC-15B-25B

TECHNICAL SPECIFICATION

Meter Type	Ultrasonic Water Meter
Nominal Diameter (mm)	DN15~DN25
Q3/Q1	R250
Measured medium	Water
Accuracy class	Class 2
Water pressure class	1.6MAP (16 bar)
Pressure-loss class	$\Delta p40$
Temperature class	T50
Installation position	H/V
The installation sensitivity class	U0/D0
Electromagnetic class	E1
Environmental class	B
Key-press	Touch control technology
Types of Indicating device	LCD:9-digits, 0~99999.9999m ³
Menu Contents	Instantaneous flow (m ³ /h), cumulative flow (m ³), screen detection, table address, cumulative working time (h), date (year/month/day), caliber, software version
Communication Interface	M-BUS, RS-485, LoRa, LoRaWAN, Pulse output, NB-IoT
Power Source	Lithium battery ER26500(replaceable)
Battery Voltage & Capacity	3.6V , 8500mAh
Life span	10 years
IP code	IP68
Storage Temperature	-25°C~+55°C
Cable length	1.0 m

DIMENSIONS

Nominal Diameter (mm)	DN15	DN20	DN25
Thread	G3/4B	G1B	G1 1/4B
L(mm)	110	130	160
H(mm)	80	85	90
W(mm)	85	85	85

WORKING CONDITION

Water temperature: 0~50°C
Working pressure: ≤16 Bar

NINGBO WELL ENERGY TECHNOLOGY CO.,LTD.

ADD: No.21,Changxin Road, Jiangbei District, Ningbo, China
TEL: 0086-574-63702808
FAX: 0086-574-63706126
E-mail: sales@well-meters.com
Website: www.well-meters.com

WATER METER

ULTRASONIC

MODEL NO.:

LXC-15F-40F

50°C ISO 4064 DN15~40 mm



LXC-15F-40F

Size: DN15 to DN40mm,(1/2"-1 1/2")
Communication: M-BUS, RS-485, Pulse output, LoRa, LoRaWAN, NB-IoT
Accuracy: R160
Waterproof standard: IP 68
Frequency: LoRaWAN 865MHz, 902MHz, 868MHz, 915MHz and Others

WATER METER

ULTRASONIC

LXC-15F-40F

TECHNICAL SPECIFICATION

Item	Parameter
Meter Type	Ultrasonic Water Meter
Nominal Diameter (mm)	DN15~DN40
Q3/Q1	R160
Measured medium	Water
Accuracy class	Class 2
Water pressure class	1.6MAP (16 bar)
Pressure loss	Δp_{25}
Temperature class	T50
Installation position	H/V
The installation sensitivity class	U10/D5
Environmental Requirement	Environment Class: E1, M1, B
Key-press	Touch control technology
Types of Indicating device	LCD:9-digits, 0~99999.9999m ³
Menu Contents	Instantaneous flow (m ³ /h), cumulative flow (m ³), screen detection, table address, cumulative working time (h), date (year/month/day), caliber, software version
Interface & Communication	M-BUS, RS-485, LoRa, LoRaWAN, Pulse output, NB-IoT
Data Storage	84 months history data
Battery	3.6VDC lithium battery
Life span	10 years
IP code	IP68
Storage Temperature	-20°C~+60°C
Cable length	1.0 m

DIMENSIONS

Nominal Diameter (mm)	DN15	DN20	DN25	DN32	DN40
Thread	G3/4B	G1B	G1 1/4B	G1 1/2B	G2B
L(mm)	110	130	160	180	200
H(mm)	102	110	120	125	130
W(mm)	95	95	95	95	95

WORKING CONDITION

Water temperature: 0~50°C
Working pressure: ≤16 Bar

NINGBO WELL ENERGY TECHNOLOGY CO.,LTD.

ADD: No.21,Changxin Road, Jiangbei District, Ningbo, China
TEL: 0086-574-63702808
FAX: 0086-574-63706126
E-mail: sales@well-meters.com
Website: www.well-meters.com

WATER METER

ULTRASONIC

MODEL NO.:

LXC-50M-500M

50°C

ISO 4064

DN50~500 mm



LXC-50M-500M

Size: DN50 to DN500mm,(2"-20")

Communication: M-BUS, RS-485, Pulse output, LoRa, LoRaWAN, NB-IoT

Accuracy: R160

Frequency: LoRa/ LoRaWAN 865MHz,902MHz,868MHz, 915MHz and Others

ULTRASONIC

TECHNICAL SPECIFICATION

Diameter	Permanent	Transitional	Minimum	Overload
	Q3(m ³ /h)	Q2(m ³ /h)	Q1(m ³ /h)	Q4(m ³ /h)
DN50	25	0.25	0.15625	31.25
DN65	40	0.4	0.25	50
DN80	63	0.63	0.39375	78.75
DN100	100	1	0.625	125
DN125	160	1.6	1	200
DN150	250	2.5	1.5625	312.5
DN200	400	4	2.5	500
DN250	630	6.3	3.9375	787.5
DN300	1000	10	6.25	1250
DN350	1400	17.9	11.2	1750
DN400	1600	20.5	12.8	2000
DN450	2000	25.6	16	2500
DN500	2500	32	20	3125
Accuracy Class	Class 2			
Range Ratio	R160			
Pressure Loss	Δp25			
Maximum Working Pressure (MPa)	1.6			
Data Storage	Data storage for continual 84 months			
Power-off Protection	The data of accumulated flow and corresponding time will be saved once power failure takes place, and the meter works automatically as soon as the power restoration			
Remote Transmission	M-BUS, RS-485, LoRa, LoRaWAN, Pulse output, NB-IoT			
Power Supply	Lithium Battery Power Supply			
Protection Class	IP68			
Medium Temperature Range	0.1°C...30°C / 0.1°C...50°C / 0.1°C...90°C			
Ambient Temperature Range	-20°C...55°C			
Environment	E1, M1, B			
Flow Field Sensitivity	U10/D5			
Installation	Horizontal or Vertical			
Battery Life	Life Time≥10 years			

DIMENSIONS

Nominal Diameter	L(mm)	H(mm)	W(mm)	Md	Bolt Hole
					Qty
DN50	200	220	170	M16	4
DN65	200	240	185	M16	4
DN80	225	255	250	M16	8
DN100	250	275	270	M16	8
DN125	250	305	300	M16	8
DN150	300	335	330	M20	8
DN200	350	395	380	M20	12
DN250	450	460	415	M24	12
DN300	500	510	470	M24	12
DN350	550	560	520	M24	16
DN400	600	590	580	M27	16
DN450	650	620	640	M27	20
DN500	650	650	705	M30	20

WORKING CONDITION

Water temperature: 0~50°C
Working pressure: ≤16 Bar

NINGBO WELL ENERGY TECHNOLOGY CO.,LTD.

ADD: No.21,Changxin Road, Jiangbei District, Ningbo, China
TEL: 0086-574-63702808
FAX: 0086-574-63706126
E-mail: sales@well-meters.com
Website: www.well-meters.com

WATER METER

ULTRASONIC

MODEL NO.:

LXC-50H-500H

50°C ISO 4064 DN50~500 mm



LXC-50H-500H

Size: DN50 to DN500mm,(2"-20")

Communication: M-BUS, RS-485, Pulse output, LoRa, LoRaWAN, NB-IoT

Accuracy: R160

Frequency: LoRa/ LoRaWAN 865MHz,902MHz,868MHz, 915MHz and Others

ULTRASONIC

TECHNICAL SPECIFICATION

Diameter	Permanent	Transitional	Minimum	Overload
	Q3(m ³ /h)	Q2(m ³ /h)	Q1(m ³ /h)	Q4(m ³ /h)
DN50	25	0.25	0.15625	31.25
DN65	40	0.4	0.25	50
DN80	63	0.63	0.39375	78.75
DN100	100	1	0.625	125
DN125	160	1.6	1	200
DN150	250	2.5	1.5625	312.5
DN200	400	4	2.5	500
DN250	630	6.3	3.9375	787.5
DN300	1000	10	6.25	1250
DN350	1400	17.9	11.2	1750
DN400	1600	20.5	12.8	2000
DN450	2000	25.6	16	2500
DN500	2500	32	20	3125
Accuracy Class	Class 2			
Range Ratio	R160			
Pressure Loss	Δp25			
Maximum Working Pressure (MPa)	1.6			
Data Storage	Data storage for continual 84 months			
Power-off Protection	The data of accumulated flow and corresponding time will be saved once power failure takes place, and the meter works automatically as soon as the power restoration			
Remote Transmission	M-BUS, RS-485, LoRa, LoRaWAN, Pulse output, NB-IoT			
Power Supply	Lithium Battery Power Supply			
Protection Class	IP68			
Medium Temperature Range	0.1°C...30°C / 0.1°C...50°C / 0.1°C...90°C			
Ambient Temperature Range	-20°C...55°C			
Environment	E1, M1, B			
Flow Field Sensitivity	U10/D5			
Installation	Horizontal or Vertical			
Battery Life	Life Time≥10 years			

DIMENSIONS

Nominal Diameter	L(mm)	H(mm)	W(mm)	Md	Bolt Hole
					Qty
DN50	200	220	170	M16	4
DN65	200	240	185	M16	4
DN80	225	255	250	M16	8
DN100	250	275	270	M16	8
DN125	250	305	300	M16	8
DN150	300	335	330	M20	8
DN200	350	395	380	M20	12
DN250	450	460	415	M24	12
DN300	500	510	470	M24	12
DN350	550	560	520	M24	16
DN400	600	590	580	M27	16
DN450	650	620	640	M27	20
DN500	650	650	705	M30	20

WORKING CONDITION

Water temperature: 0~50°C
Working pressure: ≤16 Bar

NINGBO WELL ENERGY TECHNOLOGY CO.,LTD.

ADD: No.21,Changxin Road, Jiangbei District, Ningbo, China
TEL: 0086-574-63702808
FAX: 0086-574-63706126
E-mail: sales@well-meters.com
Website: www.well-meters.com



NINGBO WELL ENERGY TECHNOLOGY CO.,LTD.

ADD: No.21,Changxin Road, Jiangbei District, Ningbo, China

TEL: 0086-574-63702808

FAX: 0086-574-63706126

E-mail: sales@well-meters.com

Website: www.well-meters.com