

Model: LXSG1-15E-25E

Multi Jet Water Meter

Feature:

- Multi jet, Dry-dial, Vertical type
- Material body: Gray cast iron / Ductile cast iron
- Size: DN15 to DN25mm, (1/2"-1")
- Available for cold water (50°C), hot water (90°C)
- Accuracy: Class B



Main Technical Data:

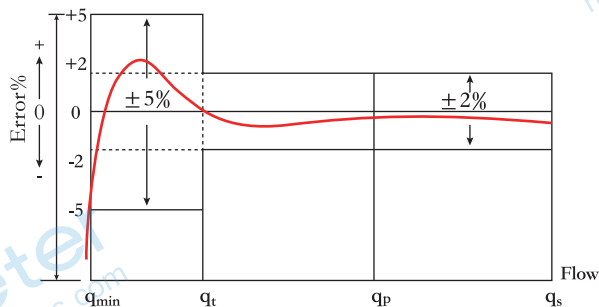
According to IS04064(GB/T778.1-1996) Standard

Size		Class	Qs	Qp	Qt	Qmin	Min	Max
DN(mm)	Inch		Overload Flow	Nominal Flow	Transitional Flow	Min Flow	Reading	Reading
		m ³ /h		L/h		m ³		
15	1/2"	A	3	1.5	150	60	0.0001	99999
		B			120	30		
20	3/4"	A	5	2.5	250	100	0.0001	99999
		B			200	50		
25	1"	A	7	3.5	350	140	0.0001	99999
		B			280	70		

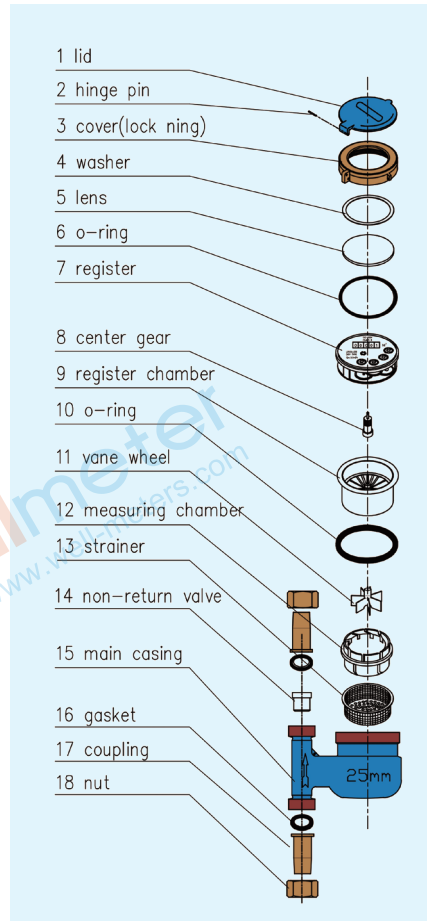
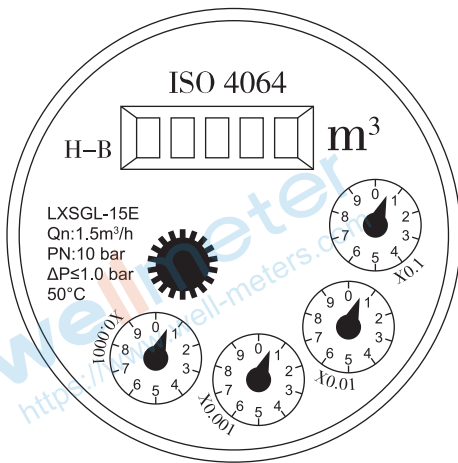
INDICATING ERROR

At low zone is $\pm 5\%$ from minimum flow rate (q_{min}) to transitional flow rate (q_t) exclusive boundary

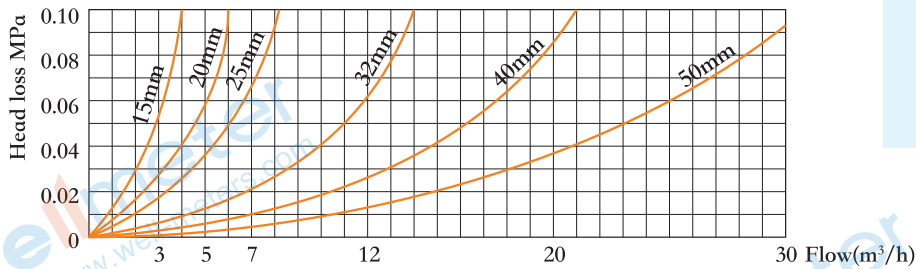
At high zone is $\pm 2\%$ from transitional flow rate (q_t) to overload flow rate (q_s)



Model: LXSG-15E-25E

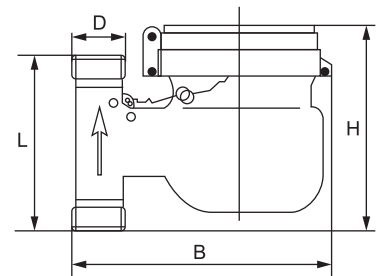


Head Loss Curve:



Dimensions and Weight:

Meter Size Dia DN	L Length	B Width	H Height	Connecting Thread D	Weight Kg
(mm)	(mm)				
15	95	135	120	G 3/4B	1.5
20	99	150	130	G 1B	1.7
25	110	160	130	G1 1/4B	3.0



WORKING CONDITION:

- Water temperature: ≤50°C for cold water meter
- Water temperature: ≤90°C for hot water meter
- Working pressure: ≤1.6Mpa